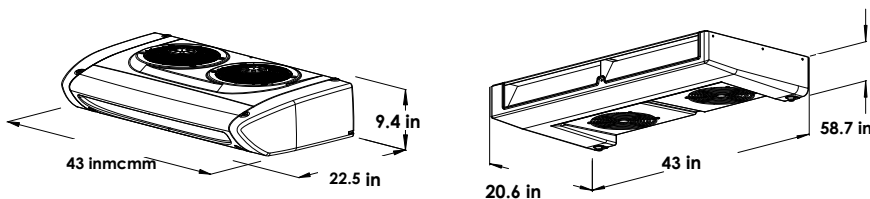
























DIMENSIONS





TECHNICAL DATA

Operation	Road		Stand-by		
Refrigerant	R404A				
Gas charge	5-6 lbs				
Cooling capacity *Ta = 86 °F			13,228 Btu/hr		7,640 Btu/hr
			7,208 Btu/hr		3,440 Btu/hr
Heating capacity *Ta = 5 °F			5,555 Btu/hr		
Rated current consumption			12 Vdc		
			34.2 A		
			220/1~/60		
			14.91 A		
Electric motor					10 A
Defrost					Hot Gas
Condensing unit weight					176.5 lbs
					90 lbs
Evaporator weight					42 lbs
					42 lbs
Compressor					147 cc
					87 cc
Evap air flow					674 ft ³
Air throw					15 ft

RECOMMENDED TRUCK BODY VOLUME

*Tc	32 °F		-4 °F	
*Ta	86 °F	104 °F	86 °F	104 °F
Vol.	989 ft ³	742 ft ³	742 ft ³	565 ft ³

LEGEND

Tc	cold room temperature		road operation
Ta	ambient temperature		stand-by operation
Vol.	volume		

STANDARD FEATURES

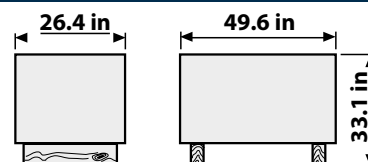
- CAB CONTROLLER
- UNIT AND CONDENSATION DRAIN INSTALLATION KIT
- VEHICLE BATTERY ELECTRIC CONNECTION KIT
- REFRIGERATOR CONNECTION KIT COMPLETE WITH FITTINGS AND PIPES OF SUITABLE LENGTH

OPTIONALS

- COMPRESSOR MOUNTING KIT
- DOUBLE SOLENOID FOR HEAT
- DIFFERENT VOLTAGE ON REQUEST
- MULTITEMPERATURE

- ELECTRICAL POWER CONNECTION KIT WITH 10 MT CABLE, PLUG AND SOCKET
- SUITABLE FOR WALL OR ROOF MOUNTING
- CARTON PALLET PACKAGING

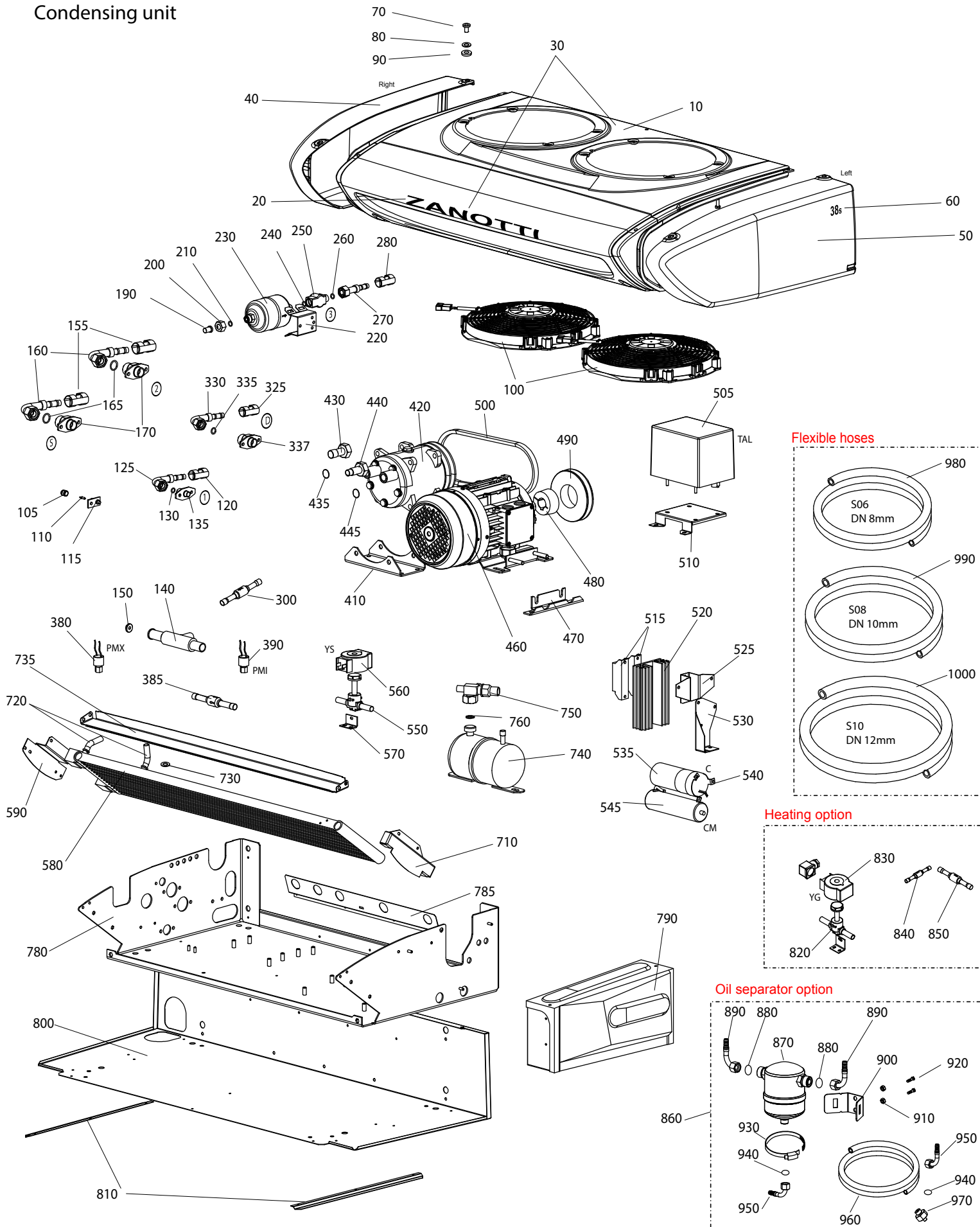
PACKAGING MASS AND DIMENSIONS



Mass = 162 lbs / Volume = 25 ft³

1400s Parts

Condensing unit



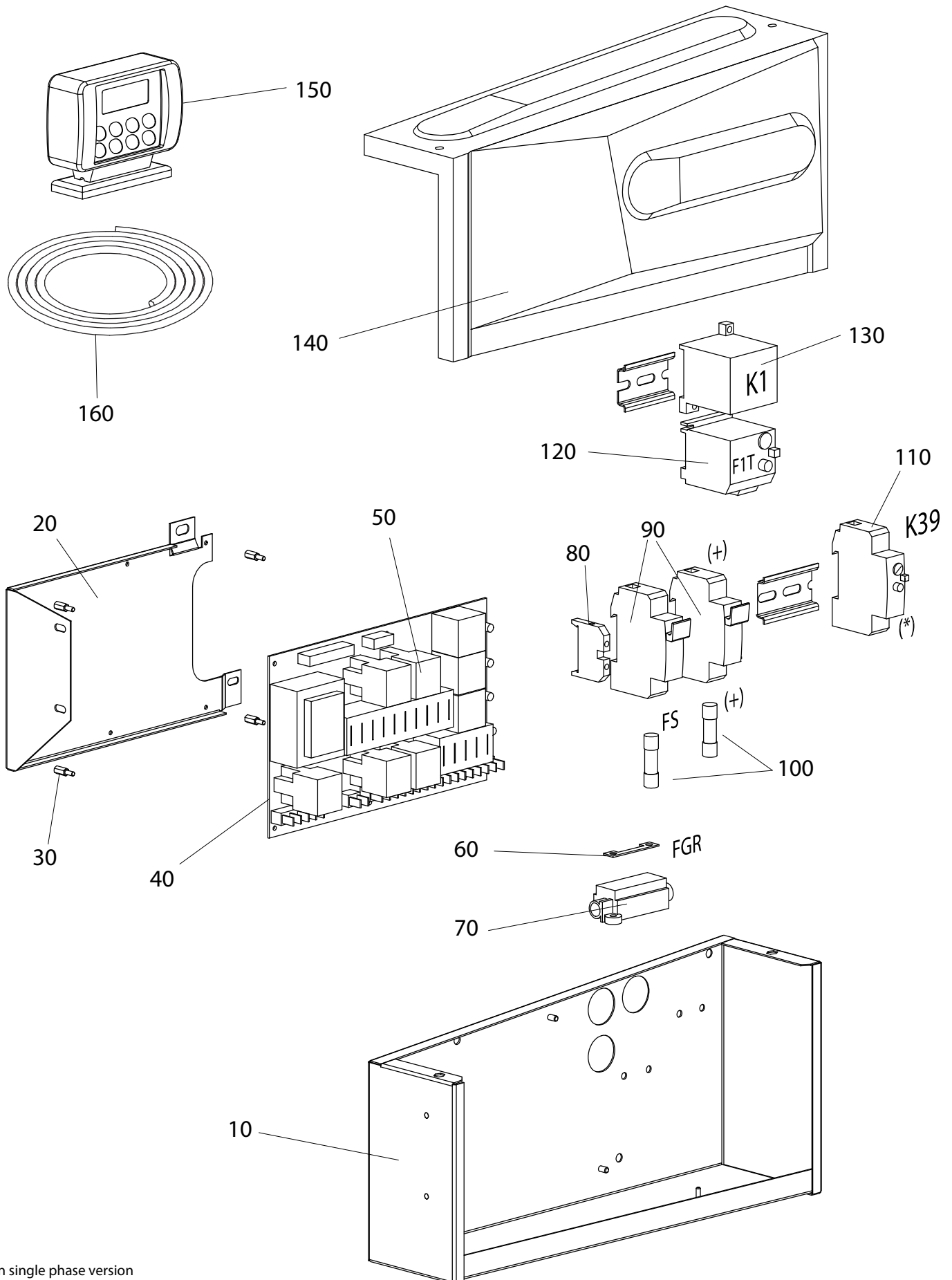
Pos.	Description	Qty	A 2010	D 2011	F 2012	G 2012	I 2013	K 2013
10	Cover	1	2KIT048	3002403	-	-	-	-
20	Sticker 'ZANOTTI'	1	3ETA922	-	-	-	-	-
30	Hood, Kit	1	2KIT048	-	-	-	-	-
40	Right Side	1	2FCS003	-	-	-	-	-
50	Left Side	1	2FCS004	-	-	-	-	-
60	Sticker 'Z38s'	2	3ETA916	-	-	-	-	-
70	Screw	7	3VTE341	3VTE375	-	-	-	-
80	Flat Washer	7	3RND044	-	-	-	-	-
90	Rubber Washer	7	3RND073	-	-	-	-	-
100	Motorfan	2	3MTV242	-	-	-	-	-
105	Cap	1	3VLC003	-	-	-	-	-
110	Coupling	1	3VLC001	-	-	-	-	-
115	not present	1	np	-	-	-	-	-
120	Clamp, Fitting, Hose S.06	1	3FSC070	-	-	-	-	-
125	Fitting	1	3RCR244	-	-	-	-	-
130	Gasket	1	3GUR026	-	-	-	-	-
135	Connection With Flange	1	2GUN006	-	-	-	-	-
140	not present	1	np	-	-	-	-	-
150	not present	1	np	-	-	-	-	-
155	Clamp, Fitting, Hose S.10	2	3FSC072	-	-	-	3FSC087	3FSC072
160	Fitting	2	3RCR242	-	-	-	3RCR100	3RCR242
165	Gasket	2	3GUR028	-	-	-	-	-
170	Connection With Flange	2	2GUN008	-	-	-	-	-
190	Connection, Soldered	1	3GMB001	-	-	-	-	-
200	Nut	1	3DDO071	-	-	-	-	-
210	Gasket	1	3GUR026	-	-	-	-	-
220	Support Bracket, Filter Drier	1	2708253	-	-	-	-	-
230	Filter Drier	1	3FLT177	-	-	-	-	-
240	Gasket	1	3GUR026	-	-	-	-	-
250	Liquid Sight Glass	1	3INU033	-	-	-	-	-
260	Gasket	1	3GUR026	-	-	-	-	-
270	Fitting	1	3RCR245	-	-	-	3RCR103	3RCR245
280	Clamp, Fitting, Hose S.06	1	3FSC070	-	-	-	3FSC089	3FSC070
285	Connection, Soldered	1	3GMB005	-	-	-	-	-
290	Nut	1	3DDO072	-	-	-	-	-
295	Gasket	1	3GUR027	-	-	-	-	-
300	Non-return Valve	1	3VLR025	-	-	-	-	-
305	Gasket	1	3GUR027	-	-	-	-	-
310	Nut	1	3001310	-	-	-	-	-
315	Spacer	1	3001311	-	-	-	-	-
320	Gasket	1	3GUR027	-	-	-	-	-
325	Clamp, Fitting, Hose S.08	1	3FSC071	-	-	-	3FSC086	3FSC071
330	Fitting	1	3RCR243	-	-	-	3RCR101	3RCR243
335	Gasket	1	3GUR027	-	-	-	-	-
337	Connection With Flange	1	2GUN007	-	-	-	-	-
380	Pressure Switch, High Pressure	1	3PRS070	-	-	-	-	-

385	Non-return Valve	1	3VLR025	-	-	-	-	-
390	Pressure Switch, Low Pressure	1	3PRS033	-	-	-	-	-
410	Support Bracket, Stand-by Compressor	1	2717218	-	-	-	-	-
420	Compressor	1	3CMT013	-	-	3CMT074	-	-
430	Coupling	1	3CNR001	-	3CNR005	-	-	-
435	Gasket	1	3GUR060	-	-	-	-	-
440	Coupling	1	3CNR002	-	3CNR006	-	-	-
445	Gasket	1	3GUR060	-	-	-	-	-
460	Electric Motor, AC	1	3MTR115	-	-	-	-	-
470	Bracket, Belt Tightening	1	2717220	-	-	-	-	-
480	Bush	1	3BSS011	-	-	-	-	-
490	Pulley	1	3PLG055	-	-	-	-	-
500	Belt	1	3CGT209	-	-	-	-	-
505	Transformer	1	3TRF146	-	-	-	-	-
510	Support Bracket, Transformer	1	2717246	-	-	-	-	-
515	Rectifier	1	3DID011	-	-	-	-	-
520	Dissipator	1	3DSS011	-	-	-	-	-
525	Support Bracket, Rectifier	1	2717244	-	-	-	-	-
530	Support Bracket, Capacitor	1	2717247	-	-	-	-	-
535	Capacitor	1	3COE048	-	-	-	-	-
540	Clamp	1	3FSC065	-	-	-	-	-
545	Capacitor	1	3COE046	-	-	-	-	-
550	Solenoid Valve	1	3VLS028	-	-	-	-	-
560	Solenoid Valve Coil, 12V	1	3CVS017	-	-	-	-	-
570	Support Bracket, Solenoid Valve	1	2717221	-	-	-	-	-
580	Condenser	1	3CND580	1CND575	-	-	-	-
590	Bracket	1	2717215	2722238	-	-	-	-
710	Bracket	1	2717227	2722239	-	-	-	-
720	Connection, Condenser	2	3CNR004	-	-	-	-	-
730	Gasket	2	3GUR061	-	-	-	-	-
735	Baffle	1	2722229	2722237	-	-	-	-
740	Tank	1	3ACP084	-	-	-	-	-
750	Shut off valve	1	3RBN124	-	-	-	-	-
760	Gasket	1	3GUR003	-	-	-	-	-
780	Bottom	1	2722210	2722230	-	-	-	-
785	Cable Passage Trough	1	2717201	-	-	-	-	-
790	Electric Box	1	3QECZ40002	-	-	-	-	-
800	Lower Casing	1	2722200	-	-	-	-	-
810	Bracket	2	2717231	-	-	-	-	-
820	not present	1	np	-	-	-	-	-
830	not present	1	np	-	-	-	-	-
840	not present	1	np	-	-	-	-	-
850	not present	1	np	-	-	-	-	-
860	not present	1	np	-	-	-	-	-
870	not present	1	np	-	-	-	-	-
880	not present	2	np	-	-	-	-	-
890	not present	2	np	-	-	-	-	-

900	not present	1	np	-	-	-	-	-
910	not present	2	np	-	-	-	-	-
920	not present	2	np	-	-	-	-	-
930	not present	1	np	-	-	-	-	-
940	not present	2	np	-	-	-	-	-
950	not present	2	np	-	-	-	-	-
960	not present	1.5	np	-	-	-	-	-
970	not present	1	np	-	-	-	-	-
980	Flexible Hose, S.06, DN08 mm	0	3TBG066	-	-	-	-	-
990	Flexible Hose, S.08, DN10 mm	0	3TBG067	-	-	-	-	-
1000	Flexible Hose, S.10, DN13 mm	0	3TBG068	-	-	-	-	-

1400s Parts

Electric Box

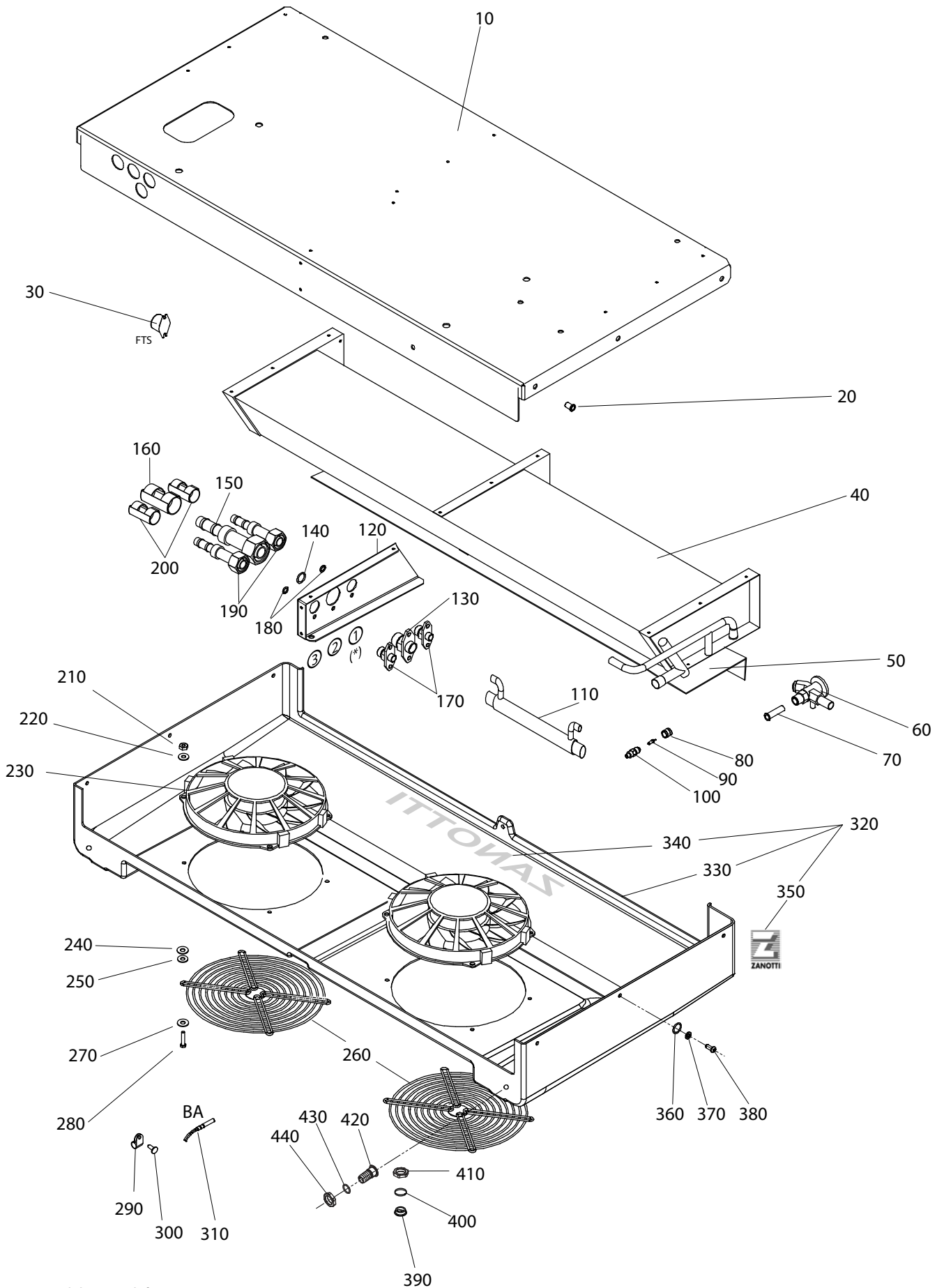


(*) only on single phase version
 (+) only on three phases version

Pos.	Description	Qty	A 2010	J 2013	M 2014
10	Electric Panel Box	1	2717240	-	-
20	Support	1	2717243	-	-
30	Spacer	4	3DSZ001	-	-
40	CPU Board, 12V	1	3SCH207	3SCH197	3SCH207
50	Relay 12V	5	3RLM074	-	-
60	Fuse	1	3FSB223	-	-
70	Fuse Holder	1	3BSF029	-	-
80	Terminal	1	3MRS028	-	-
90	Fuse Holder	1	3BSF050	-	-
100	Fuse	1	3FSB164	-	-
110	Timer	1	3TMP084	-	-
120	Overload Relay	1	3RLT095	-	-
130	Contactor	1	3TLR189	-	-
140	Cover, Electric Box	1	3002368	-	-
150	Cab Command	1	3TST024	3TST055	3TST024
160	Connecting Cable, Cab Command	1	3CAV032	-	-

1400s Parts

Evaporator

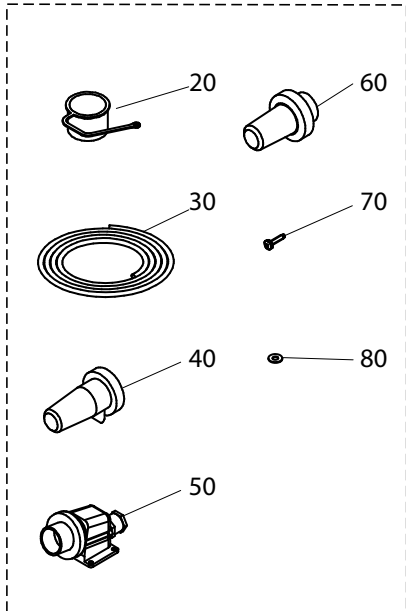


(*) Only on units with hot gas defrost option.

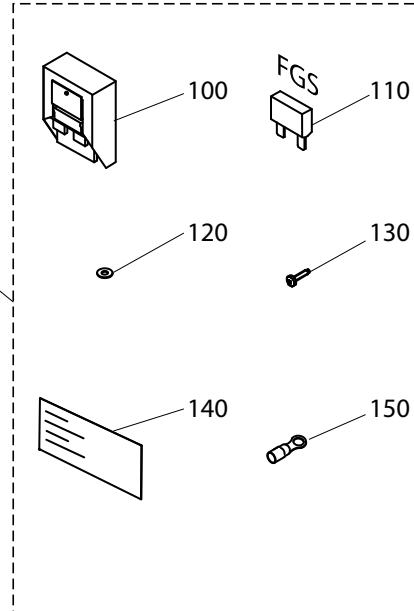
Pos.	Description	Qty.	A 2010	H 2012	I 2013	K 2013
10	Cover	1	2717125	-	-	-
20	Pawl	6	3INF019	-	-	-
30	Defrost End Thermostat	1	3TMT068	-	-	-
40	Evaporator	1	3EVP265	-	-	-
50	Baffle	1	2717062	2717063	-	-
60	Expansion Valve	1	3BUL040	-	-	-
70	Orifice	1	3ORF003	-	-	-
80	Cap	1	3VLC003	-	-	-
90	Spring	1	3VLC002	-	-	-
100	Coupling	1	3VLC001	-	-	-
110	not present	1	np	-	-	-
120	Coupling Support	1	2717126	-	-	-
130	Connection With Flange	1	2GUN008	-	-	-
140	Gasket	1	3GUR028	-	-	-
150	Fitting	1	3RCR247	-	3RCR105	3RCR247
160	Clamp, Fitting, Hose S.10	1	3FSC072	-	3FSC087	3FSC072
170	Connection With Flange	1	2GUN006	-	-	-
180	Gasket	1	3GUR026	-	-	-
190	Fitting	1	3RCR245	-	3RCR103	3RCR245
200	Clamp, Fitting, Hose S.06	1	3FSC070	-	3FSC089	3FSC070
210	Nut	8	3DDO067	-	-	-
220	Flat Washer	8	3RND038	-	-	-
230	Motorfan	2	3MTV202	3MTV260	-	-
240	Rubber Washer	8	3RND073	-	-	-
250	Flat Washer	8	3RND044	-	-	-
260	Grid	2	3GRI092	3GRI040	-	-
270	Flat Washer	8	3RND038	-	-	-
280	Screw	8	3VTE196	-	-	-
290	Clamp	1	3FSC015	-	-	-
300	Screw	1	3VTE089	-	-	-
310	Temperature Sensor	1	3SNS087	-	-	-
320	Drip Pan Kit	1	1KIT178	-	-	-
330	Drain Tray	1	3002101	-	-	-
340	Sticker 'ZANOTTI'	1	3ETA981	-	-	-
350	Sticker 'Zanotti Logo'	1	3ETA490	-	-	-
360	Rubber Washer	6	3RND073	-	-	-
370	Flat Washer	6	3RND010	-	-	-
380	Screw	6	3VTE329	-	-	-
390	Cap	2	3TPP009	-	-	-
400	Gasket	2	3GUR032	-	-	-
410	Nut	2	3DDO047	-	-	-
420	Connection, Water Drain Hose	2	3002153	-	-	-
430	Gasket	2	3GUR028	-	-	-
440	Nut	2	3DDO047	-	-	-

Completion Kits and Accessories

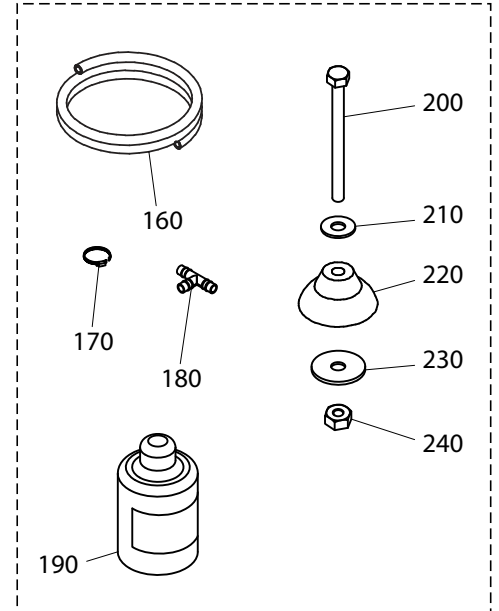
Stand-by Connection Kit



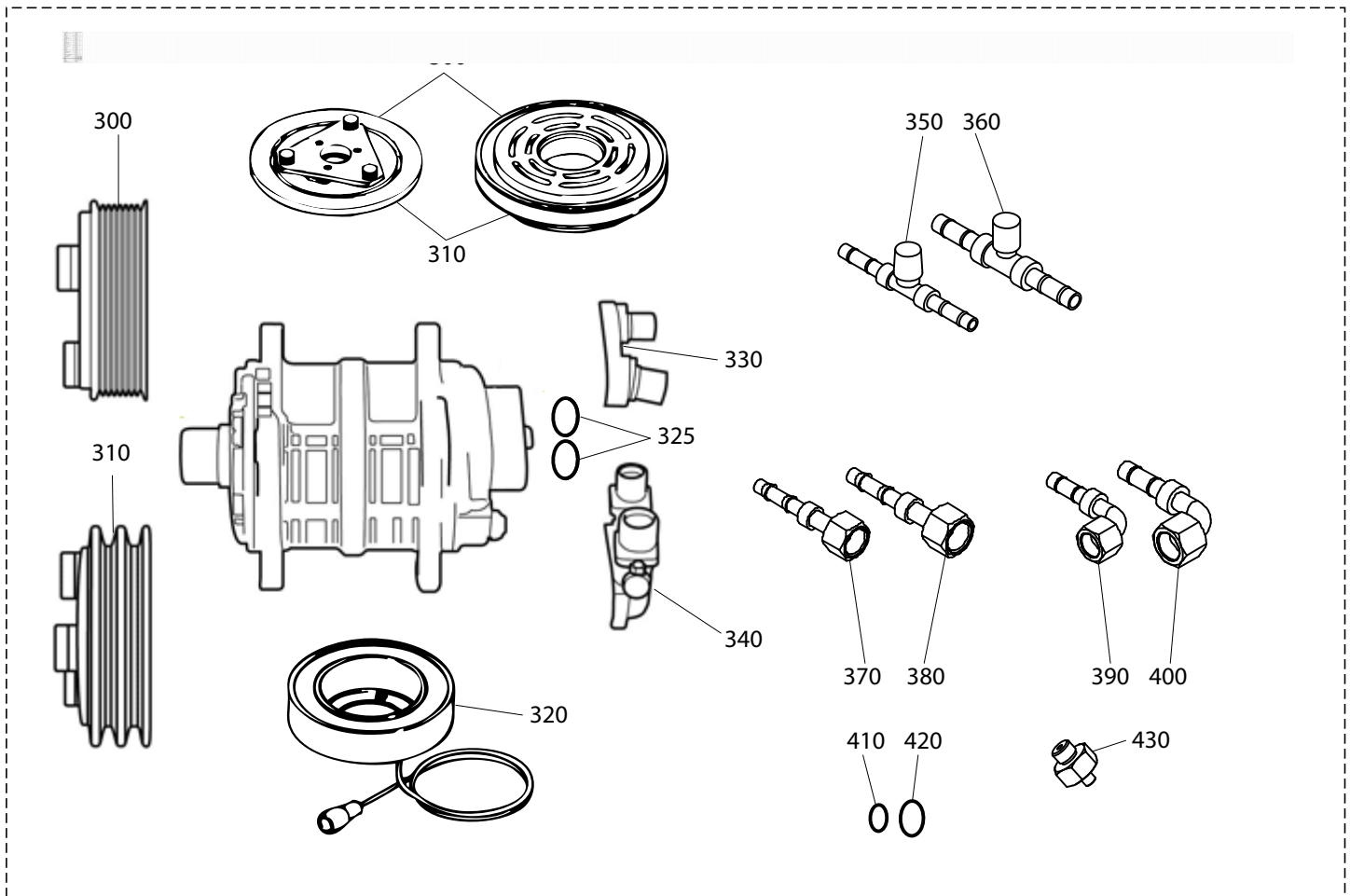
Battery Connection Kit



Other components



Road Compressor



(*) Only for TM compressors or equivalent

(+) The parts above may be optional for some model versions

Pos.	Description	Qty.	A 2010	I 2013	K 2013
10	Electrical Connection Kit, Stand-by	1	1KCR004	-	-
20	Cap, Plug	1	3COP004	-	-
30	Cable	10	3CV5100	-	-
40	Socket, Mobile	1	3PSA015	-	-
50	Plug, Fix	1	3SPN023	-	-
60	Plug, Mobile	1	3SPN024	-	-
70	Self Tapping Screw	4	3VTE221	-	-
80	Flat Washer	4	3RND007	-	-
90	Electrical Connection Kit, Road	1	1KCS022	-	-
100	Fuse Holder	1	3BSF054	-	-
110	Fuse	1	3FSB173	-	-
120	Flat Washer	1	3RND007	-	-
130	Self Tapping Screw	1	3VTE275	-	-
140	Sticker, 'Battery Connection'	1	3ETA494	-	-
150	Eyelet	4	3OCP011	-	-
160	Hose, Water Draining	0	3TBG043	-	-
170	Clamp	5	3FSC032	-	-
180	'Tee', Water Draining	1	3TEE012	-	-
190	Oil Can, POE 32	0.25	3CNO003	-	-
200	Screw	4	3VTE318	-	-
210	Flat Washer	4	3RND051	-	-
220	Rubber Feet	4	3002042	-	-
230	Flat Washer	4	3RND065	-	-
240	Locks Nut	4	3DDO070	-	-
300	Clutch Assembly, PV8, 12V	1	3RCC207	-	-
310	Clutch Assembly, 2GA, 12V	1	3RCC209	-	-
320	Clutch Coil, 12V	1	3RCC205	-	-
325	Gasket	2	3GUR545	-	-
330	Connections Manifold, Horizontal	1	3ATF009	-	-
340	Connections Manifold, Vertical	1	3ATF010	-	-
350	Service Junction, S08	1	3GNZ021	3GNZ006	3GNZ021
360	Service Junction, S10	1	3GNZ022	3GNZ007	3GNZ022
370	Fitting	1	3RCR240	3RCR090	3RCR238
380	Fitting	1	3RCR241	3RCR099	3RCR239
390	Fitting	1	3RCR238	3RCR070	3RCR240
400	Fitting	1	3RCR239	3RCR071	3RCR241
410	Gasket, S08	1	3GUR086	-	-
420	Gasket, S10	1	3GUR087	-	-
430	Connection Adapter, Oil Return Line	1	3GUN010	-	-